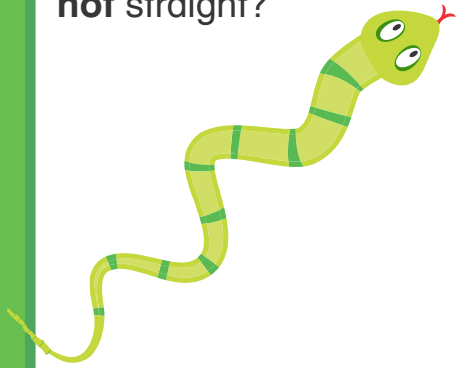
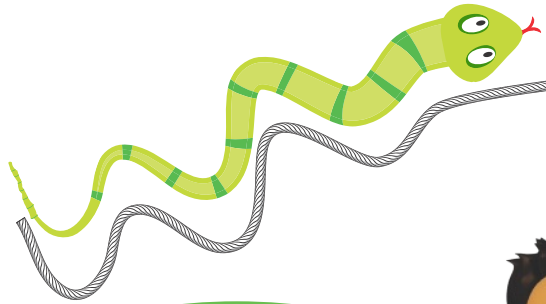


How can you measure the length of an object that is **not** straight?



Which tools can I use?



I can use string, a pipe cleaner, or something else that bends.

You can straighten the string or pipe cleaner and then thread the straws to measure its length.



The snake is about 4 straws long.

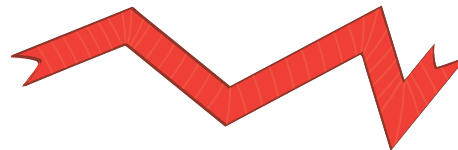
**Convince Me!** How does using a string help you measure the length of the snake?

☆ **Guided Practice** ☆

Circle whether you need just straws or the straws and a string to measure the length of each object. Then measure.

1. straws

string and straws



about 3 straws

2. straws

string and straws



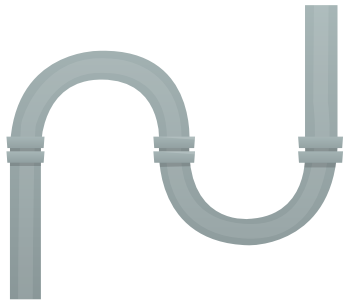
about \_\_\_\_ straws

**Independent Practice**

Circle whether you need just straws or the straws and a string to measure the length of each object. Then measure.

3. straws

string and straws



about \_\_\_\_\_ straws

4. straws

string and straws



about \_\_\_\_\_ straws

5. straws

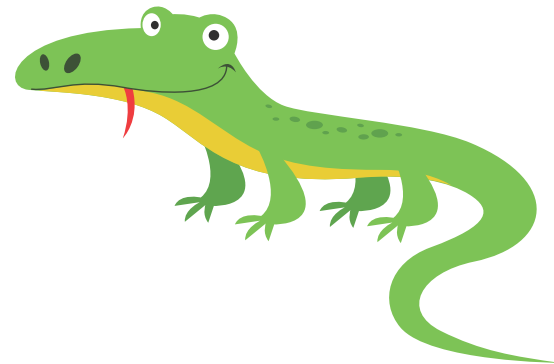
string and straws



about \_\_\_\_\_ straw

6. straws

string and straws



about \_\_\_\_\_ straws

## Performance Task

### Ant Paths

Kate wants to know which path to the anthill is longer.

7. **Use Tools** Circle the tool or tools that Kate should use to measure.

straws

string and straws

8. **Explain** Explain why you made that choice.

---

---

---

---

9. **Use Tools** Measure each path. Which path is longer?

Path A is about \_\_\_\_ straws long.

Path B is about \_\_\_\_ straws long.

Path \_\_\_\_ is longer.

